

Godfrey Hirst

Feltex

Mohawk Group

ivc COMMERCIAL



FlexLok[®]



**A CARPET TILE ADHESIVE TAB SYSTEM
DELIVERING A FLEXIBLE, FLOATING
MODULAR FLOOR.**

A flexible, fast, and fuss-free installation system.

The FlexLok® tab system is an odourless, dry installation system used in lieu of the traditional wet spread adhesive method for installing carpet tiles.

Without compromising the performance of your carpet tiles, FlexLok® can be installed on any substrate, including wood and concrete. Faster to install and with less mess and downtime waiting for traditional adhesives to tack-off, FlexLok® provides the flexibility of a floating modular floor.

FlexLok® is a superb solution for reducing complications on restricted access sites and reducing damage to any subfloors, which is particularly important for heritage buildings, short lease tenancies and installations over raised access flooring.

A sustainable installation solution, FlexLok® features:

- Declare Red List Free Certification
- Health Product Declaration

- CRI Green Label Plus Certification
- Virtually no VOC's or harmful chemicals

FlexLok® tabs are designed to work with in-slab moisture. Our Enviro Bac® backing system features a low Moisture Vapour Emission Rate (MVER), allowing exceptional moisture vapour transmission, which can be difficult to achieve with some traditional wet spread adhesives that can have a barrier-like effect.

Easy to transport, install and remove post-installation, FlexLok® gives you the ability to effortlessly replace carpet tiles if ever required, and with a host of tab placement options, creative installation layouts have never been easier.

Contact your GH Commercial consultant to learn more or order a box for your next project.

FLEXLOK

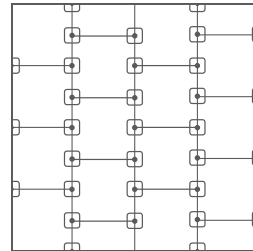
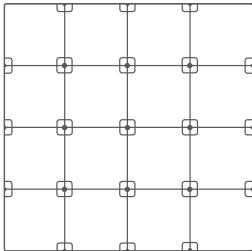
FlexLok works on all carpet tiles in the GH Commercial portfolio, with the exception of the Tuff Stuff II Collection and any cushion backed products.

Enviro Bac® backing allows for moisture conditions up to 99% RH. There should, however, be no visible signs of moisture.

Declare.



TAB PLACEMENT – TILES

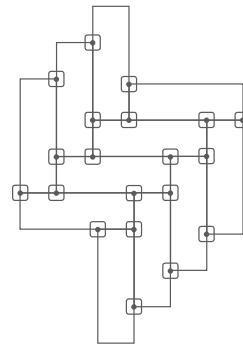
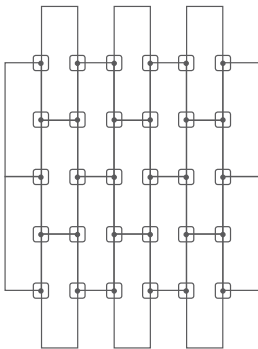


Quarter Turn, Monolithic, and Multi-Directional

Brick and Ashlar

Lay anchor rows and place a FlexLok[®] tab at every joint. Install remaining carpet tiles, placing FlexLok[®] tabs as illustrated in the diagram. Place a FlexLok[®] tab at every joint around the perimeter of the room.

TAB PLACEMENT – PLANKS



All Install Methods

Lay anchor rows and place a FlexLok[®] tab at every joint. Install carpet using a step method placing a FlexLok[®] tab at every corner. Must be used in middle of length as well as four corners.


For full information regarding the installation of the FlexLok[®] tab system, please refer to the GH Commercial Carpet Tile Installation Instructions or the GH Commercial Carpet Plank Installation Instructions.





Godfrey Hirst

Feltex

 Mohawk Group

 **ivc** COMMERCIAL



COMMERCIAL

Global flooring solutions

AU: 1300 444 778 | NZ: 0800 500 210

ghcommercial.com

